





Order no.: 115244

**Folding scaffolding SG**  
1.35 x 1.80 m with  
outrigger Platform height  
5.16 m


### Accessories for the product family




Order no.: 027992  
**Safety railing for mobile scaffolding**




Order no.: 027972  
**Folding frame unit, 1.35 m For scaffolding length: 1.8 m**



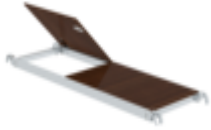
Order no.: 027902  
**Push-fit frame, 1.35 m. Height: 1.00 m**



Order no.: 027901  
**Push-fit frame, 1.35 m. Height: 2.00 m**



Order no.: 027955  
**Railing lengthwise 1,800 mm**



Order no.: 027931

**Platform with trapdoor** For scaffolding length: 1.8 m



Order no.: 027932

**Platform without flap** For scaffolding length: 1.8 m



Order no.: 027911

**Toe board front side** For scaffolding width: 1.35 m



Order no.: 027943

**Toe board long side** For scaffolding length: 1.8 m



Order no.: 027937

**Diagonal brace** 1.8 m



Order no.: 027935

**Horizontal strut** For scaffolding length: 1.8 m



Order no.: 027926

**Triangular outrigger**



Order no.: 027973

**Swivel castor with spindle height adjustable** Ø 125 mm



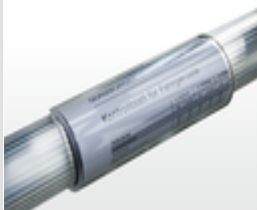
Order no.: 027940

**Step-on bracket**



Order no.: 027912

**Ballast weight with hanging brackets** RAL 1021



Order no.: 019081

**Clip tray for tubes** Ø 50 mm



Order no.: 027920

**Wall spacer adjustable** Adjustable up to 1.0 m



Order no.: 070506

**Frame extension can be clamped on** Adjustment range max. 400 mm



Order no.: 019274

**Storage tray 500 x 220 mm** Clamping range 38–51 mm



Order no.: 019276

**Storage tray 800 x 300 mm** Clamping range 38–51 mm



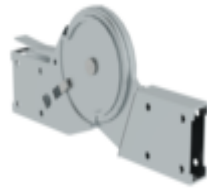
Order no.: 019175

Inspection sticker  
40 x 40 mm



Order no.: 019176

Inventory sticker



Order no.: 019477

Automatic steel  
hinge for  
scaffolding folding  
frame



Order no.: 019136

Spring clip for  
mobile scaffolding  
with short pin,  
closed



Order no.: 019137

Spring clip for  
mobile scaffolding  
with long pin, open



Order no.: 070524

Scaffolding strut  
telescopic 1,700–  
2,500 mm



Order no.: 027104

Height-adjustable  
spindle



Order no.: 027922

Swivel castor with  
spindle, non-  
marking grey height  
adjustable Ø 200  
mm



Order no.: 027921

Swivel castor with  
spindle, electrically  
conductive height  
adjustable Ø 200  
mm



Order no.: 027959

Swivel castor Ø  
125 mm With  
parking brake and  
pin



Order no.: 027958

Swivel castor Ø  
200 mm With  
parking brake and  
pin