





Order no.: 115601

Folding scaffold
0.75x1.80m with
extension unit Platform
height 1.55 m

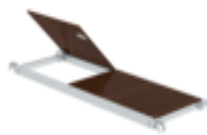
Accessories for the product family




Order no.: 027992
Safety railing for mobile scaffolding




Order no.: 027945
Folding frame unit with swivel castors



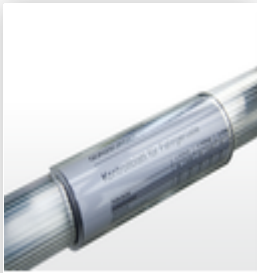
Order no.: 027931
Platform with trapdoor For scaffolding length: 1.8 m



Order no.: 027935
Horizontal strut For scaffolding length: 1.8 m



Order no.: 027912
Ballast weight with hanging brackets RAL 1021



Order no.: 019081

Clip tray for tubes
Ø 50 mm



Order no.: 027920

Wall spacer
adjustable
Adjustable up to
1.0 m



Order no.: 070506

Frame extension
can be clamped on
Adjustment range
max. 400 mm



Order no.: 019274

Storage tray 500 x
220 mm Clamping
range 38–51 mm



Order no.: 019276

Storage tray 800 x
300 mm Clamping
range 38–51 mm



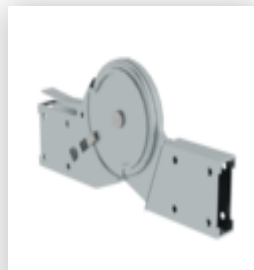
Order no.: 019175

Inspection sticker
40 x 40 mm



Order no.: 019176

Inventory sticker



Order no.: 019477

Automatic steel
hinge for
scaffolding folding
frame



Order no.: 070507

Safety door on
front side Push-fit
frame 0.75



Order no.: 019136

Spring clip for
mobile scaffolding
with short pin,
closed



Order no.: 027104

Height-adjustable
spindle



Order no.: 027922

Swivel castor with
spindle, non-
marking grey height
adjustable Ø 200
mm



Order no.: 027921

Swivel castor with
spindle, electrically
conductive height
adjustable Ø 200
mm



Order no.: 027959

Swivel castor Ø
125 mm With
parking brake and
pin



Order no.: 027958

Swivel castor Ø
200 mm With
parking brake and
pin



Order no.: 027905

Push-fit frame, 0.75
m. Height: 1.00 m



Order no.: 027902

Push-fit frame, 1.35
m. Height: 1.00 m