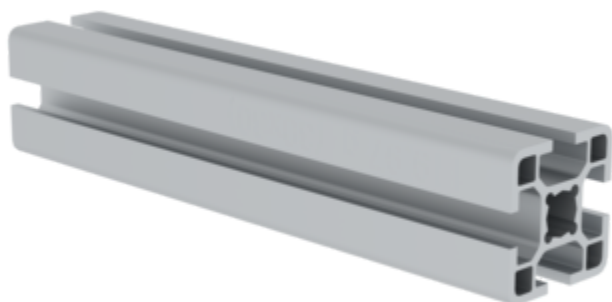


Order no.: 930104

## Aluminium profile 30x30 mm



### Specification

Profile type <b>Construction profile</b>	Length max. <b>6 m</b>	Material <b>Aluminium</b>	Profile dimension X <b>30 mm</b>	Profile dimension Y <b>30 mm</b>
Weight per metre <b>950 g/m</b>	Groove size <b>6 mm</b>	No. of grooves <b>4</b>	Ix Area moment of inertia <b>28088 cm<sup>4</sup></b>	Iy Area moment of inertia <b>28088 cm<sup>4</sup></b>
Cross-sectional area FL <b>296.21 mm<sup>2</sup></b>	Surface texture <b>Anodised aluminium</b>	Anodising <b>Bright E6/EV5</b>	End design <b>Sawn</b>	Core hole diameter <b>M10</b>
Order no. <b>930104</b>				

### Facts

- Construction profile made from aluminium
- Screw channel profile with T-slot
- For sturdy, versatile constructions
- Simple installation
- Versatile use
- Added visual and functional benefits

### Description

The 30x30 mm aluminium profile is a construction profile made from high-quality aluminium that is suitable for a wide range of applications. The screw channel profile with a T-slot provides an extremely sturdy construction that is easy to assemble. The profile is available in various lengths up to 6000 mm and is versatile in its use. The added visual and

- Bright anodised
- In different lengths up to 6000 mm

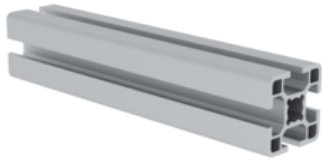
functional benefits make the profile particularly attractive.

### Scope of supply

- Aluminium profiles, sawn to the required length (max. 6 m): 1 x

### More product pictures

---



## Corporate certifications

---

on sustainability criteria



Management System  
ISO 9001:2015  
ISO 14001:2015  
[www.tuv.com](http://www.tuv.com)  
ID 9108612548

