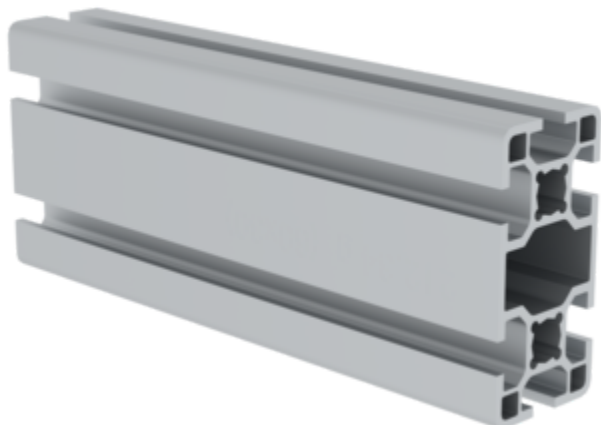


Order no.: 930105

Aluminium profile 30x60 mm



Specification

Profile type Construction profile	Length max. 6 m	Material Aluminium	Profile dimension X 30 mm	Profile dimension Y 60 mm
Weight per metre 1450 g/m	Groove size 6 mm	No. of grooves 6	Ix Area moment of inertia 53161 cm4	Iy Area moment of inertia 18984 cm4
Cross-sectional area FL 524.28 mm²	Surface texture Anodised aluminium	Anodising Bright E6/EV4	End design Sawn	Core hole diameter M10
Article no. 930105				

Facts

- Construction profile made from aluminium
- Screw channel profile with T-slot
- For sturdy, versatile constructions
- Simple installation
- Versatile use
- Added visual and functional benefits

Description

The 30x60 mm aluminium profiles are the ideal choice for anyone looking for a slim, elegant profile. The profile is available in various lengths up to 6000 mm and is versatile in its use. The T-slot in the screw channel allows versatile constructions to be created with the profile. The aluminium profile is bright anodised.

- Bright anodised
- In different lengths up to 6000 mm

Scope of supply

- Aluminium profiles, sawn to the required length (max. 6 m): 1 x

More product pictures



Corporate certifications

on sustainability criteria

