

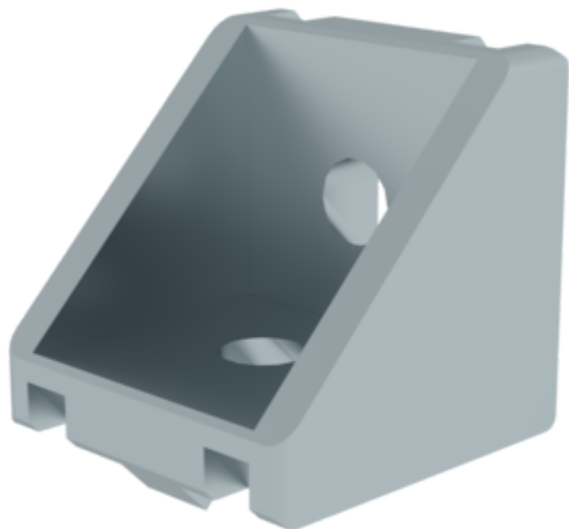
Order no.: 930207

## Corner bracket 30x30 mm

Type

30x30

40x40



### Specification

Connection type <b>Angle connection</b>	Material <b>Die-cast</b>	Weight/piece <b>23 g</b>	Groove size <b>6 mm</b>	Dimension A <b>30 mm</b>
Dimension B <b>30 mm</b>	Dimension C <b>30 mm</b>	Dimension D <b>5 mm</b>	Order no. <b>930207</b>	

### Facts

- Profile angle for profile 30
- For joining profiles to each other
- Particularly suitable for retrofitting profiles

### Description

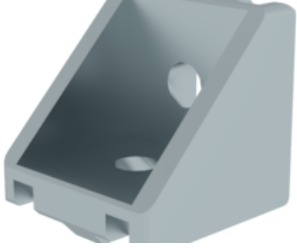
The 30x30 mm corner bracket is a profile angle that has been specially developed for profile 30. It is ideal for joining profiles to each other and is particularly suitable for retrofitting profiles. Thanks to its high-quality finish, the 30x30 mm corner bracket is particularly durable.

### Scope of supply

- Corner bracket: 1 x

## More product pictures

---



## Corporate certifications

---

on sustainability criteria



Management System  
ISO 9001:2015  
ISO 14001:2015  
[www.tuv.com](http://www.tuv.com)  
ID 9108612548

