

Order no.: 040340

Step straight ladder, truck



Type

Without exit rail

Exit rail left

Exit rail right

Specification

Working height 3.15 m	Step design Steps	Ladder length 1.43 m	Depth of side-rails 73 mm	Number of steps/rungs 5 steps
Weight 5.4 kg	Transport dimensions 1400 x 500 x 200 mm, 5.4 kg	Business division MUNK Günzburger Steigtechnik	Article no. 040340	Price € 280.00

Facts

- Aluminium step straight ladder
- Stable rectangular tube side-rails
- Grooved steps with a depth of 80 mm
- 4-fold edged step-to-side-rail connection
- Flexible means of extension thanks to optional push-fit section
- For safe access to the truck / trailer
- Including ladder head safety device with magnets with high holding force (2x 68 kg)
- Available with and without extendable handrail (length 1.12 m)

- nivello® ladder shoes with patented 2-axis inclination technology
- Step spacing: 235 mm
- Ladder width: 420 mm
- Ladder inclination: 70°
- Maximum load: 150 kg

Scope of supply

- Ladder: 1 x
- Ladder head protection: 2 x

Information on sustainability criteria

- Corporate certification: ISO 9001
- Corporate certification: EN 1090
- Corporate certification: EcoVadis
- RoHS
- REACH
- The MUNK Group complies with a Code of Conduct
- The Supply Chain Act does not apply due to our size
- The materials used are listed in the technical specification
- Resource-saving production: own photovoltaic systems
- Energy-efficient consumption during production: LED lighting
- Repairability, durability and quality: 15-year warranty on series products made in Germany
- Recyclability: Our products are mostly made of aluminium, steel or wood and can be fed directly into the recycling process.
- Socially acceptable working conditions in production: fair wages, gender equality
- Economical and recyclable packaging: no use of polystyrene, predominantly use of wood and cardboard, small amounts of plastic
- No health hazards for the users

More product pictures



Added value

Industrial grade

Stable and robust for tough everyday working life (including 4-way edging)

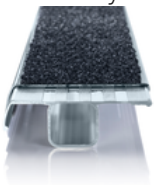
- Corrosion-resistant fixtures
- Use of high-quality and high-strength materials
- Versatile and practical accessories



clip-step R 13 step padding

Certified non-slip protection for step ladders

- Fulfils the requirements of the highest possible non-slip class R 13 thanks to aluminium oxide particles
- Improves work safety in wet and oil-contaminated environments
- Applied up to the maximum accessible step as a visual check
- Retrofittable, available as a spare part and also in yellow in selected lengths (RAL 1021)



Large range of accessories

- The right equipment for every application
- Practical and makes work easier
- Suitable for universal use on Günzburger Steigtechnik ladders



The movable ladder shoe sets new standards in stability

[Learn more](#)



Sponsored by BG BAU

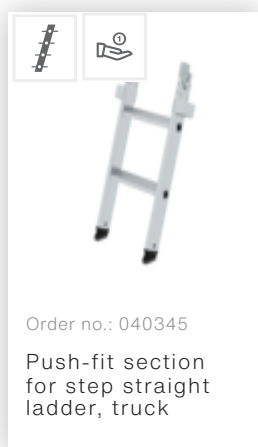
Specification subject to conditions; for the latest information please visit the BG BAU website (statutory accident insurance company for the construction and construction related services in Germany). Since 2014, the BG BAU has been promoting the purchase of platform ladders, step stools and ladder accessories with single-sided and double-sided access. All members of the BG BAU profit from this. This aims to prevent work accidents on building sites and improve ergonomic working practices. For more information by BG BAU, please visit:

www.bgbau.de/service/angebote/arbeitschutzpraemien

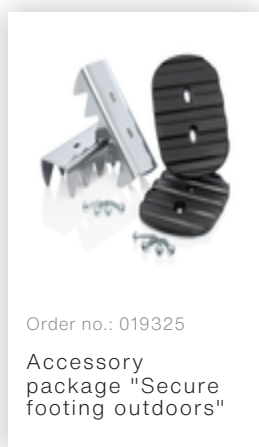
A brief overview of the subsidy and an overview of our eligible products can be found on our website under [know-how](#).

**BG BAU
gefördert**
0 % der Anschaffung
kosten bis Maximalbetrag

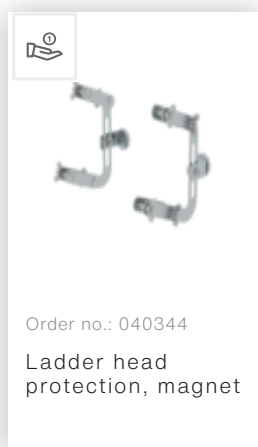
Accessories



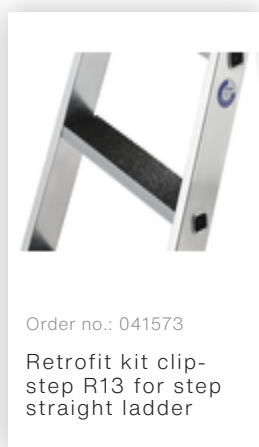
Order no.: 040345
Push-fit section for step straight ladder, truck



Order no.: 019325
Accessory package "Secure footing outdoors"

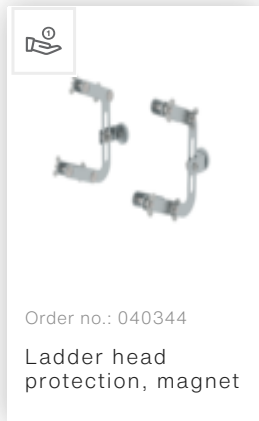


Order no.: 040344
Ladder head protection, magnet



Order no.: 041573
Retrofit kit clip-step R13 for step straight ladder

Spare parts



Corporate certifications

on sustainability criteria

