

Order no.: 042710

Double-sided stepladder suitable for stairs



Number of steps/rungs

2x5

2x6

2x7

2x8

Specification

| | | | | |
|--|---|--|---|--|
| Working height 2.95 m | Step design Steps | Number of steps/rungs 2x 5 steps | Step depth 80 mm | Step/Rung distance 235 mm |
| Type of non-slip protection Aluminium corrugated | Height 1.14 m | Total length folded 1.24 m | Base spread 1.03 m | Base spread max. extended 1.39 m |
| Inclination 70 ° | Lower outer width, ascent unit extended 616 mm | Lower outer width, ladder retracted 580 mm | Lower outer width, support part extended 670 mm | Max. adjustment range on the ascent unit 300 mm |
| Max. adjustment range on the support part 800 mm | Depth of side-rails 73 mm | Width of side-rails 24.5 mm | Max. load capacity 150 kg | Design type Freestanding Double-sided access Suitable for stairs |
| Weight 13.6 kg | Transport dimensions 1250 x 600 x 210 mm, 13.6 kg | Business division MUNK Günzburger Steigtechnik | Article no. 042710 | Price € 662.00 |

Facts

- Step ladder made of aluminium
- Stable rectangular tube side-rails
- Grooved steps with a depth of 80 mm

- 4-fold edged step-to-side-rail connection
- Conical side-rail guide for safe stance
- Four bar extensions with solid sliding guide and ergonomic star handle
- Seamlessly adjustable: ascent section up to 300 mm, support section up to 800 mm
- External adjustment mechanism / star handle for safe walking on the ladder without tripping hazard
- nivello® ladder shoes with patented 2-axis inclination technology
- 4-fold bolted, solid ladder joint made of aluminium
- Can optionally be equipped with clip-step step padding, clip-step R13 and clip-step relax
- Step spacing: 235 mm
- Maximum load: 150 kg

Scope of supply

- Ladder: 1 x

Information on sustainability criteria

- Corporate certification: ISO 9001
- Corporate certification: EN 1090
- Corporate certification: EcoVadis
- RoHS
- REACH
- The MUNK Group complies with a Code of Conduct
- The Supply Chain Act does not apply due to our size
- The materials used are listed in the technical specification
- Resource-saving production: own photovoltaic systems
- Energy-efficient consumption during production: LED lighting

- Repairability, durability and quality: 15-year warranty on series products made in Germany
- Recyclability: Our products are mostly made of aluminium, steel or wood and can be fed directly into the recycling process.
- Socially acceptable working conditions in production: fair wages, gender equality
- Economical and recyclable packaging: no use of polystyrene, predominantly use of wood and cardboard, small amounts of plastic
- No health hazards for the users

More product pictures



Added value

Industrial grade

Stable and robust for tough everyday working life (including 4-way edging)

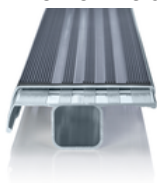
- Corrosion-resistant fixtures
- Use of high-quality and high-strength materials
- Versatile and practical accessories



clip-step step padding

Optimised and certified non-slip protection for greater comfort and safety

- Made of grooved plastic
- Exact fit and easy to clip onto the steps
- Applied up to the maximum accessible step as a visual check
- Retrofittable and available as spare part



The movable ladder shoe sets new standards in stability

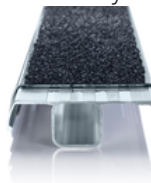
[Learn more](#)



clip-step R 13 step padding

Certified non-slip protection for step ladders

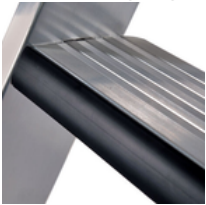
- Fulfils the requirements of the highest possible non-slip class R 13 thanks to aluminium oxide particles
- Improves work safety in wet and oil-contaminated environments
- Applied up to the maximum accessible step as a visual check
- Retrofittable, available as a spare part and also in yellow in selected lengths (RAL 1021)



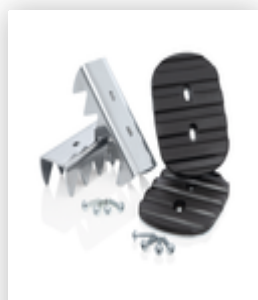
relax step® step padding

Greater comfort during prolonged periods of working on the ladder


- Worked into the leading edge of the step
- Pads the front edge of the ladder step
- Comfortable cushioning for leaning and bracing against the next step



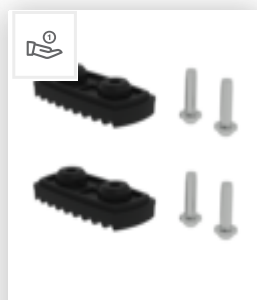
Accessories



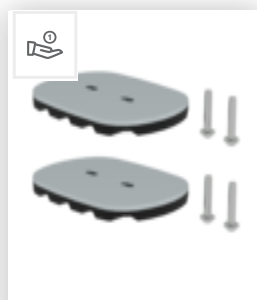
Order no.: 019325
Accessory package "Secure footing outdoors"



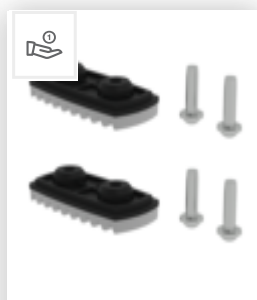
Order no.: 019841
XL wall-mounted ladder holder




Order no.: 019219
nivello® foot plate, electrically conductive




Order no.: 019213
nivello® foot plate for gratings 126 x 89 mm



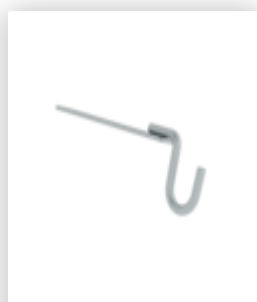
Order no.: 019211
nivello® foot plate for smooth surfaces



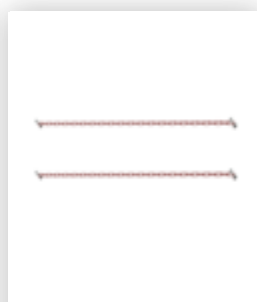
Order no.: 019224
nivello® foot plate, claw



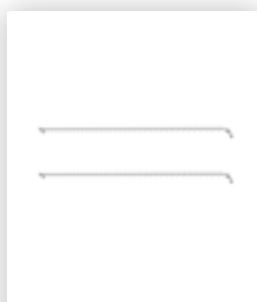
Order no.: 019216
nivello® inside shoe, electrically conductive



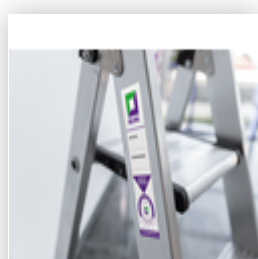
Order no.: 019115
Bucket hook




Order no.: 019189
Link chain restraint




Order no.: 019188
Knot chain restraint




Order no.: 019176
Inventory sticker




Order no.: 019175
Inspection sticker



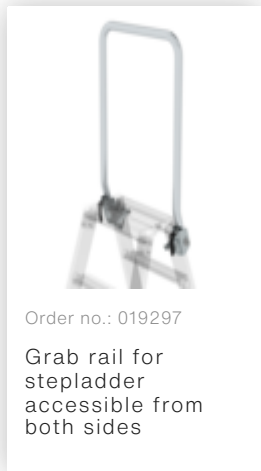
Order no.: 041527
Retrofit kit clip-step for double-sided step ladder, with double-sided access



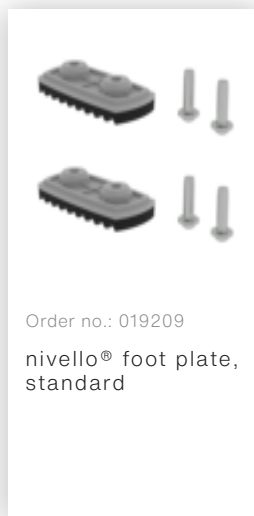
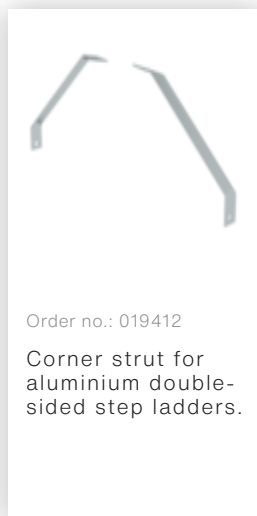
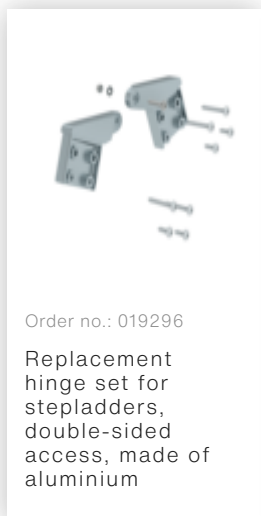
Order no.: 041555
Retrofit kit clip-step R13 for double-sided step ladder, with double-sided access



Order no.: 041675
Retrofit kit clip-step relax for double-sided step ladder with double-sided access



Spare parts



Corporate certifications

on sustainability criteria

