



Order no.: 033806

## Double-sided stepladder wood



Number of steps/rungs

2x3

2x4

2x5

2x6

2x7

2x8

### Specification

Working height <b>2.25 m</b>	Step design <b>Steps + Rungs mixed</b>	Number of steps/rungs <b>2x 3 steps</b>	Step/Rung height <b>20 mm</b>	Step depth <b>80 mm</b>
Step/Rung distance <b>250 mm</b>	Ladder length <b>885 mm</b>	Total length folded <b>885 mm</b>	Base spread <b>750 mm</b>	Inclination <b>70 °</b>
Lower outer width <b>480 mm</b>	Upper outer width <b>430 mm</b>	Depth of side-rails <b>65 mm</b>	Width of side-rails <b>22 mm</b>	Max. load capacity <b>150 kg</b>
Design type <b>Freestanding   Double-sided access</b>	Weight <b>5 kg</b>	Transport dimensions <b>900 x 470 x 160 mm, 5 kg</b>	Business division <b>MUNK Günzburger Steigtechnik</b>	Article no. <b>033806</b>
Price <b>€ 134.00</b>				

### Facts

- Double-sided step ladder made of wood
- Side bars made of solid sawn coniferous wood, steps made of beech wood

- Grooved steps with a depth of 80 mm
- Die obersten beiden Sprossen aus Buche 22 x 44 mm
- Pegged step-to-side-rail connection, resulting in smooth side-rail surface
- Sturdy steel hinges
- Supplied as standard with practical bucket hook
- Spread protection through firmly screwed textile straps
- plastic transport lock at the base of the ladder
- Step spacing: 230 mm
- Ladder inclination: 70°
- Maximum load: 150 kg
- These products are covered by the statutory warranty

### **Scope of supply**

- Ladder: 1 x

### **Information on sustainability criteria**

---

- Corporate certification: ISO 9001
- Corporate certification: EN 1090
- Corporate certification: EcoVadis
- RoHS
- REACH
- The MUNK Group complies with a Code of Conduct
- The Supply Chain Act does not apply due to our size
- The materials used are listed in the technical specification
- Resource-saving production: own photovoltaic systems
- Energy-efficient consumption during production: LED lighting

- Repairability, durability and quality: 15-year warranty on series products made in Germany
- Recyclability: Our products are mostly made of aluminium, steel or wood and can be fed directly into the recycling process.
- Socially acceptable working conditions in production: fair wages, gender equality
- Economical and recyclable packaging: no use of polystyrene, predominantly use of wood and cardboard, small amounts of plastic
- No health hazards for the users

## More product pictures



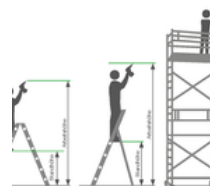
### Added value

#### Industrial grade

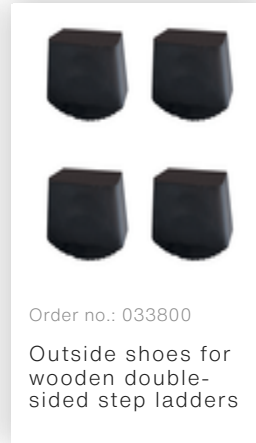
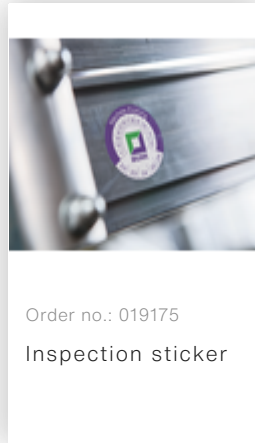
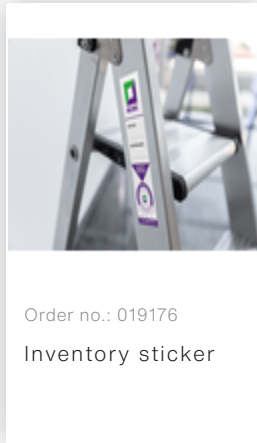
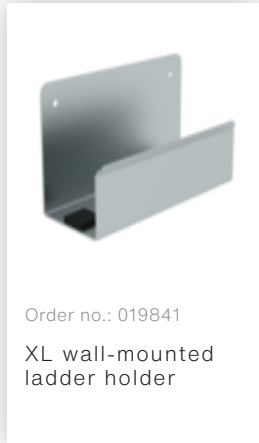
- Sturdy processing for demanding applications (e.g. 4-fold edging)
- Corrosion-resistant fixtures
- Use of high-quality and high-strength materials
- Versatile and practical accessories

#### Note: Working heights

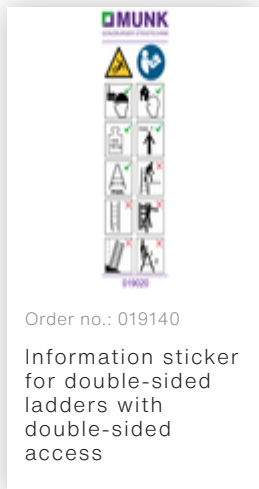
- National regulations (e.g. TRBS 2121 Part 2 in Germany) must be complied with with regard to the maximum working height when using the ladder as a workstation.
- Information on [TRBS 2121 Part 2](#) has been summarised on our Service page
- Read our [tips and tricks](#) on how to calculate [working height](#)



## Accessories



## Spare parts



## Corporate certifications

---

on sustainability criteria

