



Order no.: 115114

## Folding scaffolding SG 0.75 x 1.80 m

Platform height [mm]

2080

3200

### Specification

Working height <b>4.08 m</b>	Scaffolding height <b>3.35 m</b>	Platform height <b>2.08 m</b>	Platform width <b>750 mm</b>	Platform length <b>1.8 m</b>
Load capacity <b>1.5 kN/m<sup>2</sup></b>	Weight <b>86 kg</b>	Transport dimensions <b>1900 x 1100 x 800 mm, 74 kg</b>	Indoor use, central installation <b>possible &amp; allowed</b>	Indoor use, lateral installation <b>not possible</b>
Outdoor use, central installation <b>possible &amp; allowed</b>	Outdoor use, lateral installation <b>not possible</b>	Ballasting of scaffolding, indoor, central installation <b>60 kg</b>	Ballasting of scaffolding, outdoor, central installation <b>270 kg</b>	Business division <b>MUNK Günzburger Steigtechnik</b>
Article no. <b>115114</b>	Price <b>€ 3,141.00</b>			

### Facts

- Mobile scaffolding made of sturdy round aluminium tubing with welded frame parts
- Secured all around thanks to leading railing, can be assembled and dismantled from level to level
- All scaffolding parts are also available individually as spare or extension parts

- Folding frame made of rectangular tube side-rails with self-locking hinges
- Space-saving transport and storage
- Four Ø 125 mm swivel castors with centric load application and spindles
- Slip-resistant platform for secure standing
- Aluminium toe boards and railing frames with integrated knee board as safety railing (from platform height of 2.8 m and higher)
- Simple setup and removal without tools
- Different platform widths available (0.75 / 1.35 m)
- Platform lengths of 2.45 m and 3.0 m upon request
- Working heights up to 13.88 m
- GS-tested as per DIN EN 1004
- Load class/scaffolding group 2: 1.5 kN/m<sup>2</sup>

### Scope of supply

- Folding frame unit, 0.75 m: 1 x
- Safety railing for mobile scaffolding: 2 x
- Platform with trapdoor: 1 x
- Toe board front side: 2 x
- Toe board long side: 2 x
- Swivel castor with spindle: 4 x
- Instructions for assembly and use EN 1004-2 - de: 1 x
- Push-fit frame, 0.75 m.: 2 x

### Information on sustainability criteria

- Corporate certification: ISO 9001
- Corporate certification: EN 1090
- Corporate certification: EcoVadis
- RoHS
- REACH
- The MUNK Group complies with a Code of Conduct
- The Supply Chain Act does not apply due to our size

- The materials used are listed in the technical specification
- Resource-saving production: own photovoltaic systems
- Energy-efficient consumption during production: LED lighting
- Repairability, durability and quality: 15-year warranty on series products made in Germany
- Recyclability: Our products are mostly made of aluminium, steel or wood and can be fed directly into the recycling process.
- Socially acceptable working conditions in production: fair wages, gender equality
- Economical and recyclable packaging: no use of polystyrene, predominantly use of wood and cardboard, small amounts of plastic
- No health hazards for the users

## More product pictures

---



## Added value

---

### Safety at heights

- Optional protective assembly railing as safety railing during installation and removal
- Installation without the need of tools, uncomplicated and easy to handle
- Railing with integrated knee board and aluminium toe boards



### Highest quality

- User-friendly and robust design
- Low weight of the individual parts for easy handling
- Welded round tube frames for maximum stability
- All-round profiled rungs for safe ascent and descent



### Modular kit system

- More than 180 variants are possible by combining different individual parts
- Flexible adaptations and extensions possible at any time
- Individual parts at the original part price
- Installation and removal without tools



### Safe standing

- Adjustable outriggers with swing base or chassis bar ensure safe working depending on model
- Easy to handle
- Additional ballast weights required depending on application



### Sturdy connection

- Automatically closing scaffolding claw with sophisticated geometry for a secure connection
- Innovative spring clip for plug-on frame – no accidental loosening or losing possible
- Transverse and diagonal braces for high stability



### Flexible basis

- Swivel castors with load centring in braked condition
- Height adjustment for level compensation
- Various sizes and designs

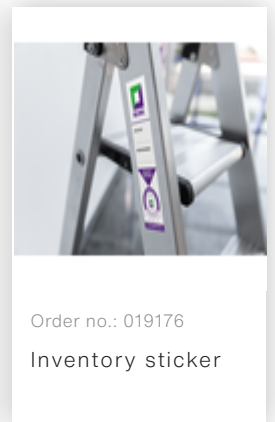
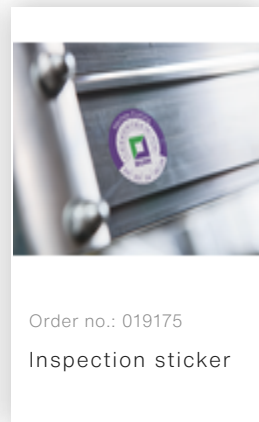
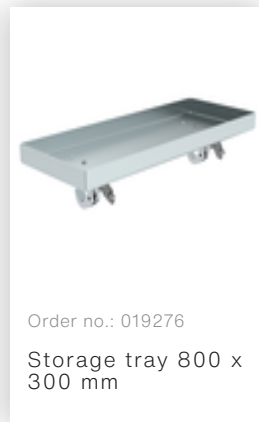
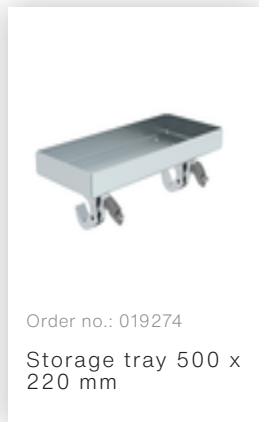
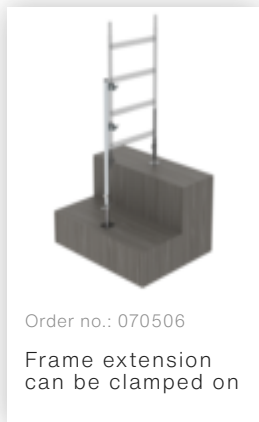
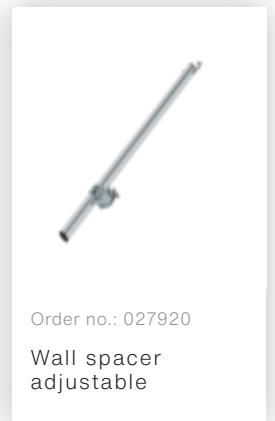
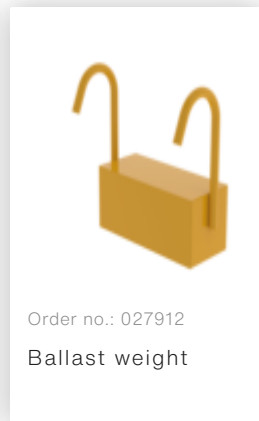
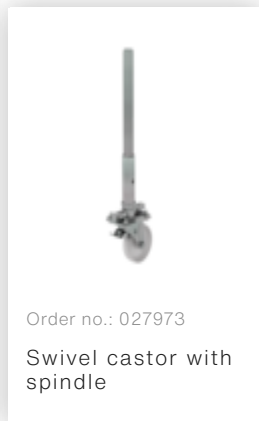
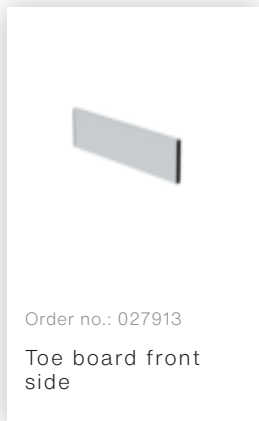
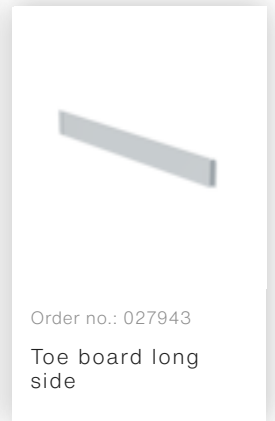
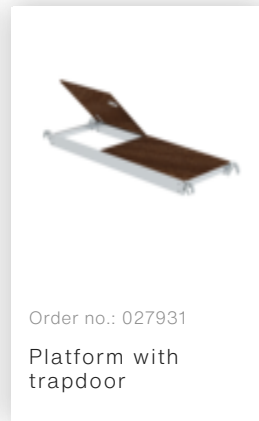
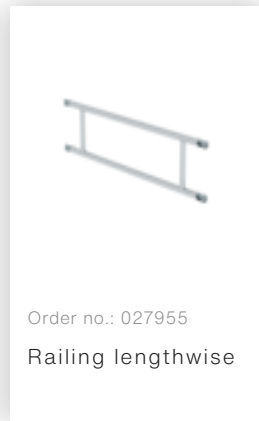
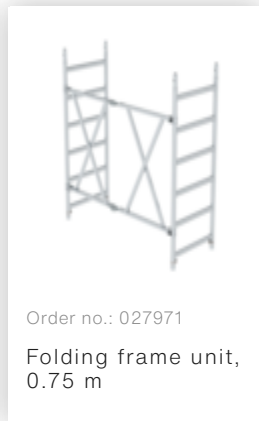
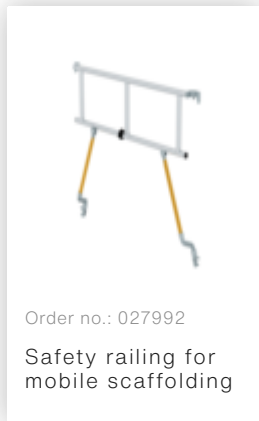


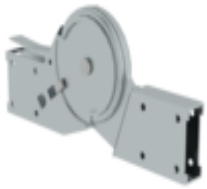
### Everything at a glance

- Clip tray for clearly visible attachment of the necessary test documents to the scaffolding
- Weather and UV-resistant



## Accessories





Order no.: 019477

Automatic steel hinge for scaffolding folding frame



Order no.: 019136

Spring clip for mobile scaffolding



Order no.: 027104

Height-adjustable spindle



Order no.: 027922

Swivel castor with spindle, non-marking grey



Order no.: 027921

Swivel castor with spindle, electrically conductive



Order no.: 027959

Swivel castor



Order no.: 027958

Swivel castor



Order no.: 027905

Push-fit frame, 0.75 m.

## Corporate certifications

---

on sustainability criteria

