

Order no.: 600464

## Stairs with 45° platform, step width 1,000 mm



Number of steps

4	5	6	7	8	9	10	11	12
13	14	15	16	17	18			

### Specification

Surface <b>Aluminium corrugated</b>	Number of steps/rungs <b>4 steps</b>	Step width <b>1 m</b>	Height <b>1.93 m</b>	Vertical height <b>830 mm</b>
Base area <b>1.52 m</b>	Business division <b>MUNK Günzburger Steigtechnik</b>	Transport dimensions <b>2344 x 1176 x 1150 mm, 38.6 kg</b>	Article no. <b>600464</b>	Price <b>€ 1,544.00</b>

### Facts

- Fixed stairs with aluminium platform and inclination 45°
- Step and platform width: 1,000 mm
- Platform length: 460 mm
- Last step (depth: 225 mm) mounted at the same height as the platform (total tread area: 685 mm)
- Standard step and platform surface, grooved aluminium (R 9), optionally also available with other surfaces (see overview on right)
- Handrail and railing on one side, Ø 40 mm, with bolted connecting elements as standard (height: 1,100 mm) as standard

- Front side railing available at a surcharge
- Second handrail optional (necessary in case of wall distance > 120 mm in accordance with DIN EN ISO 14122-3)
- Lower side-rail ends with robust foot brackets for floor-mounted installation
- Easy installation thanks to delivery in pre-assembled modules including assembly instructions
- For stairs with a step width of 800 or 1,000 mm and a vertical height of 3,300 mm or more, a central support is required (at a surcharge or provided through client)
- If no support surfaces or attachments are provided by the customer, a triangular console must be used for mounting
- Maximum load: 1.5 kN/m<sup>2</sup>, step load 150 kg, total load 300 kg
- Note: The standard version includes connecting parts of galvanised steel, which are suitable for indoor use. At a surcharge, they can also be made of stainless steel, which is recommended for outdoor use

### Scope of supply

- Stair module: 1 x
- Handrail (enclosed separately): 1 x
- Garde-corps: 1 x
- Installation material: 1 x
- Assembly instructions: 1 x

### Information on sustainability criteria

---

- Corporate certification: ISO 9001
- Corporate certification: EN 1090
- Corporate certification: EcoVadis
- RoHS
- REACH

- The MUNK Group complies with a Code of Conduct
- The Supply Chain Act does not apply due to our size
- The materials used are listed in the technical specification
- Resource-saving production: own photovoltaic systems
- Energy-efficient consumption during production: LED lighting
- Repairability, durability and quality: 15-year warranty on series products made in Germany
- Recyclability: Our products are mostly made of aluminium, steel or wood and can be fed directly into the recycling process.
- Socially acceptable working conditions in production: fair wages, gender equality
- Economical and recyclable packaging: no use of polystyrene, predominantly use of wood and cardboard, small amounts of plastic
- No health hazards for the users

## More product pictures

---



## Added value

### Product configurator

Configuring, enquiring about and ordering individual products could not be easier with our [product configurator](#) for stairs, bridging steps and mobile platform stairs. Simply enter your required dimensions and versions step by step, and a rotating 3D model will appear in real time. To save your configuration and request a quotation requires a login which will be set up for you by our Sales team.



### Handrail and railing

- Handrail on one side as standard (height: 1,100 mm)
- Depending on the application, a second handrail or front side railing are available
- At an additional charge, plug-in pockets with quick-release fasteners for easy removal of railing and handrail and railing with filler rods or coverings available



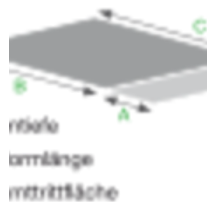
### Safety railing in the access area

- Safety doors with fixed sizes or telescopic
- Alternative when, for example, a safety door is not possible due to structural conditions. Safety barriers or safety rope are also available



### Top surface

The total tread area depends on the platform length selected. This is made up of the platform length plus the depth of the last step(s) (for bridging steps times two), as these are mounted at the same height



### **Different widths**

- Steps and platforms are available in standard widths of 600, 800 and 1,000 mm
- Special sizes available on request



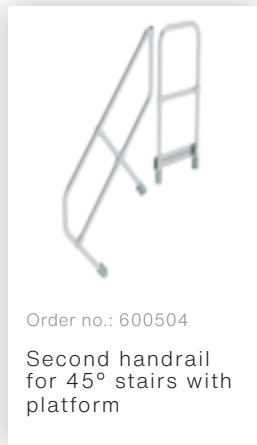
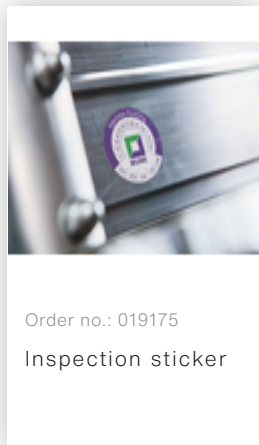
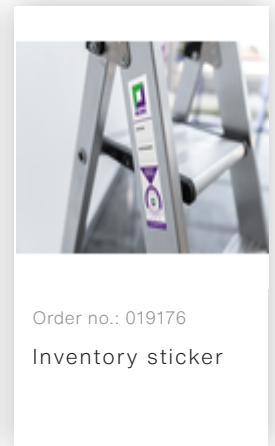
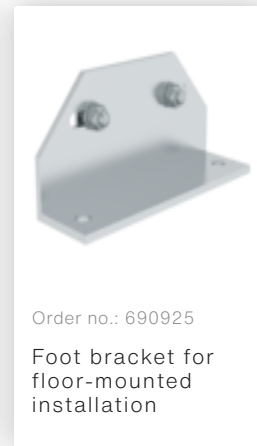
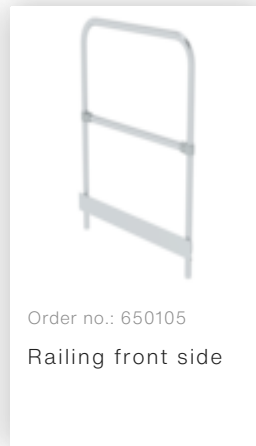
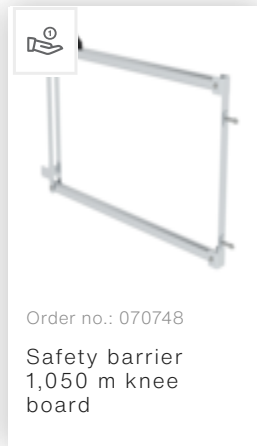
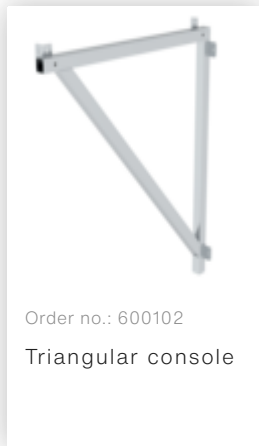
### **Simple installation**

- Delivery in pre-assembled modules including assembly instructions
- Quick assembly thanks to screw connections for struts and support parts as well as plug-in pockets for railings

### **This is what distinguishes our stairs and bridging steps**

- Individual planning and production by Günzburger Steigtechnik experts in accordance with customer specifications
- Inclinations of 45° and 60° and widths of 600, 800 and 1,000 mm as standard, special dimensions and deviating inclinations available on request
- Standard step and platform design in grooved aluminium (R 9), optionally also in steel grating (R 12), aluminium grating (R 13), perforated steel cover (R 13), perforated aluminium cover (R 13) or with corundum coating (R 13)
- Handrail and railing on one side made of Ø 40 mm tubes with bolted connecting elements as standard (height: 1,100 mm). Handrail and railing are available on both sides at a surcharge, as well as plug-in pockets with quick-release fasteners for easy removal of the railing and railings with filler rods or covers
- Side-rails made of strong aluminium sections. The upper end is equipped with support angles, the lower end with plastic shoes
- Depending on step width and vertical height, central supports in the form of consoles or support frames, and intermediate platforms are sometimes required (at an additional charge)
- Maximum load: 1.5 kN / m<sup>2</sup>, step load 150 kg, total load 300 kg
- Foot bracket for fixing to the ground and various undercarriage variants for mobile use optionally available as accessories
- The delivery from the factory is made in pre-assembled modules for quick and simple assembly in accordance with the enclosed assembly instructions

## Accessories



## Corporate certifications

---

on sustainability criteria

