

Order no.: 040670

**Step push-up extension ladder 2-section with nivello® stabiliser and clip-step R13**



Number of steps

- 2x7
- 2x9
- 11 + 10
- 14 + 10

**Specification**

Working height <b>4.4 m</b>	Step design <b>Steps</b>	Number of steps/rungs <b>2x 7 steps</b>	Step depth <b>80 mm</b>	Step/Rung distance <b>263 mm</b>
Retracted length <b>2.21 m</b>	Extended length <b>3.62 m</b>	Inclination <b>70 °</b>	Outer width <b>420 mm</b>	Stabiliser width <b>930 mm</b>
Depth of side-rails <b>85 mm</b>	Width of side-rails <b>25 mm</b>	Design type <b>To lean against   2-part</b>	Weight <b>18 kg</b>	Transport dimensions <b>2455 x 500 x 200 mm, 18.024 kg</b>
Predecessor product <b>040630</b>	Business division <b>MUNK Günzburger Steigtechnik</b>	Order no. <b>040670</b>	Price <b>€ 863.00</b>	

**Facts**

- Aluminium stepladder
- Stable rectangular tube side-rails
- Grooved steps with a depth of 80 mm
- 4-fold edged step-to-side-rail connection
- Simple height adjustment and safer locking from the front due to corrosion-resistant push-fit fittings on the sides
- Extra wide base area of 170 mm in depth in the overlap area of the lower and upper ladders

- Upper ladder with ladder head protection (Velcro tape) for fastening to gutters or similar.
- Lower ladder with nivello® stabiliser for extra stability and safe ascent (enclosed separately)
- Upper ladder with nivello® ladder shoes, as removable for individual use
- clip-step R13 step padding for certified non-slip protection
- Step spacing: 263 mm
- Ladder width: 420 mm (without stabiliser)
- Ladder inclination: 70°
- Maximum load: 150 kg

### Scope of supply

- Ladder: 1 x
- Stabiliser (enclosed separately): 1 x
- Instructions for use and operation: 1 x

### Information on sustainability criteria

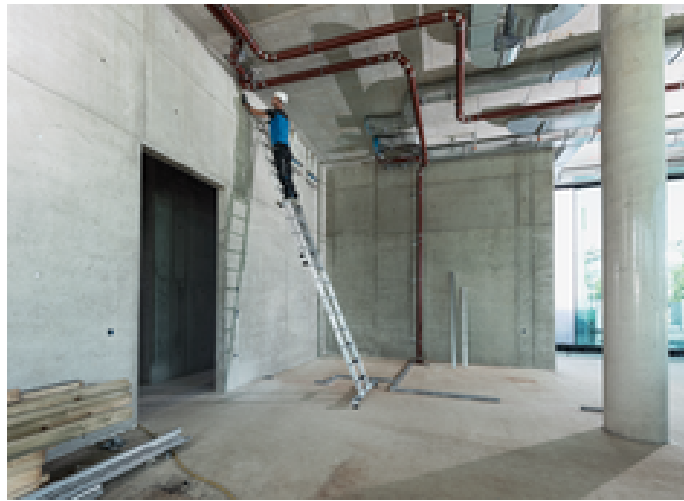
---

- Corporate certification: ISO 9001
- Corporate certification: ISO 14001
- Corporate certification: EN 1090
- Corporate certification: EcoVadis
- RoHS
- REACH
- The MUNK Group complies with a Code of Conduct
- The Supply Chain Act does not apply due to our size
- The materials used are listed in the technical specification
- Resource-saving production: own photovoltaic systems
- Energy-efficient consumption during production: LED lighting
- Repairability, durability and quality: 15-year warranty on series products made in Germany
- Recyclability: Our products are mostly made of aluminium, steel or wood and can be fed directly into the recycling process.
- Socially acceptable working conditions in production: fair wages, gender equality

- Economical and recyclable packaging: no use of polystyrene, predominantly use of wood and cardboard, small amounts of plastic
- No health hazards for the users

### More product pictures

---



## Added value

---

### Industrial grade

Stable and robust for tough everyday working life (including 4-way edging)

- Corrosion-resistant fixtures
- Use of high-quality and high-strength materials
- Versatile and practical accessories



### Large range of accessories

- The right equipment for every application
- Practical and makes work easier
- Suitable for universal use on Günzburger Steigtechnik ladders



Optimum and smooth operation, thanks to easily accessible elements

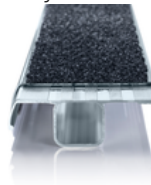
- Simple height adjustment from rung to rung or from step to step
- Wall wheels on the upper part (from 14 rungs or more)
- Fittings with sliding guides
- Smooth-running rope pulley



### clip-step R 13 step padding

Certified non-slip protection for step ladders

- Fulfils the requirements of the highest possible non-slip class R 13 thanks to aluminium oxide particles
- Improves work safety in wet and oil-contaminated environments
- Applied up to the maximum accessible step as a visual check
- Retrofittable, available as a spare part and also in yellow in selected lengths (RAL 1021)



### **nivello® stabiliser**

Extra safe, standards-compliant ascent for straight ladders over 3.0 m

- Extra wide stabiliser for even greater stability
- nivello® ladder shoes with patented 2-axis inclination technology, integrated work angle check and exchangeable foot plates
- Individually available as spare part



The movable ladder shoe sets new standards in stability

[Learn more](#)



### **roll-bar retrofit kit**

- Rolling instead of carrying: ergonomic and convenient handling
- Simple, no-drill mounting on stabilisers
- User-friendly operation without bending down



### **Sponsored by BG BAU**

Specification subject to conditions; for the latest information please visit the BG BAU website (statutory accident insurance company for the construction and construction related services in Germany). Since 2014, the BG BAU has been promoting the purchase of platform ladders, step stools and ladder accessories with single-sided and double-sided access. All members of the BG BAU profit from this. This aims to prevent work accidents on building sites and improve ergonomic working practices. For more information by BG BAU, please visit:

[www.bgbau.de/service/angebote/arbeitsschutzpraem](http://www.bgbau.de/service/angebote/arbeitsschutzpraem)

A brief overview of the subsidy and an overview of our eligible products can be found on our website under [know-how](#).

### **EuroTest Prize 2019**

for outstanding achievements in occupational health and safety



## Corporate certifications

---

on sustainability criteria



Management System  
ISO 9001:2015  
ISO 14001:2015  
[www.tuv.com](http://www.tuv.com)  
ID 9108612548



**Nachhaltigkeit**  
**EcoVadis**  
sustainable supply management  
CSR-Rating in Silber 2022

