

Order no.: 011124

Household stepladder



Number of steps

- 3
- 4
- 5
- 6



Specification

Working height 2.57 m	Step design Steps	Number of steps/rungs 3 steps	Platform included as step Yes	Step depth 80 mm
Type of non-slip protection Aluminium corrugated	Platform height 570 mm	Max. load capacity 150 kg	Design type Freestanding Single-sided access	Weight 3.5 kg
Transport dimensions 1340 x 415 x 115 mm, 3.5 kg	Business division MUNK Günzburger Steigtechnik	Article no. 011124	Price € 69.00	

Facts

- Aluminium household ladder
- 80 mm deep grooved steps and large platform
- Non-slip ladder shoes
- From five steps or more: Spreader lock with two high-strength polyester straps
- Maximum load: 150 kg

Scope of supply

- Ladder: 1 x

Information on sustainability criteria

- Corporate certification: ISO 9001
- Corporate certification: EN 1090
- Corporate certification: EcoVadis
- RoHS
- REACH
- The MUNK Group complies with a Code of Conduct
- The Supply Chain Act does not apply due to our size
- The materials used are listed in the technical specification
- Resource-saving production: own photovoltaic systems
- Energy-efficient consumption during production: LED lighting
- Repairability, durability and quality: 15-year warranty on series products made in Germany
- Recyclability: Our products are mostly made of aluminium, steel or wood and can be fed directly into the recycling process.
- Socially acceptable working conditions in production: fair wages, gender equality
- Economical and recyclable packaging: no use of polystyrene, predominantly use of wood and cardboard, small amounts of plastic
- No health hazards for the users

More product pictures



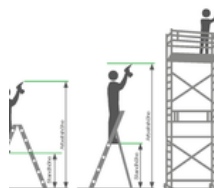
Added value

Quality

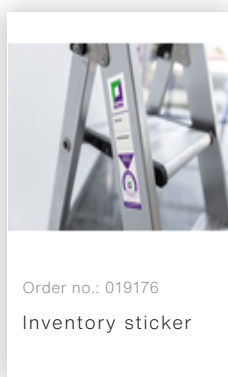
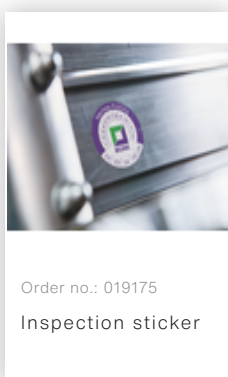
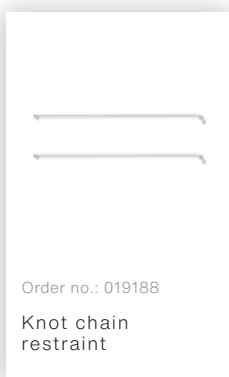
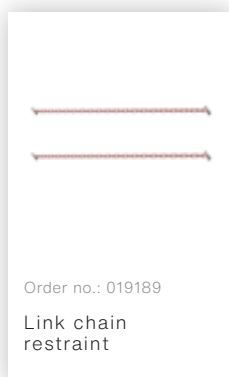
- Approved and suitable for professional use
- These products are covered by the statutory warranty

Note: Working heights

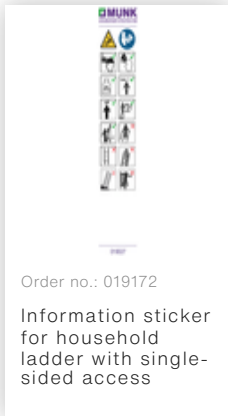
- National regulations (e.g. TRBS 2121 Part 2 in Germany) must be complied with with regard to the maximum working height when using the ladder as a workstation.
- Information on [TRBS 2121 Part 2](#) has been summarised on our Service page
- Read our [tips and tricks](#) on how to calculate [working height](#)



Accessories



Spare parts



Corporate certifications

on sustainability criteria

