



Order no.: 036008

## Rung straight ladder made of glass-fibre reinforced plastic without stabiliser



Number of rungs

- 8
- 10
- 12
- 14
- 6

### Specification

Working height <b>3.6 m</b>	Step design <b>Rungs</b>	Number of steps/rungs <b>8 rungs</b>	Step/Rung height <b>29 mm</b>	Step depth <b>28 mm</b>
Step/Rung distance <b>280 mm</b>	Ladder length <b>2.48 m</b>	Outer width <b>420 mm</b>	Depth of side-rails <b>73 mm</b>	Width of side-rails <b>25 mm</b>
Max. load capacity <b>150 kg</b>	Design type <b>To lean against</b>	Weight <b>7.5 kg</b>	Transport dimensions <b>2480 x 428 x 75 mm, 7.5 kg</b>	Business division <b>MUNK Günzburger Steigtechnik</b>
Order no. <b>036008</b>	Price <b>€ 483.00</b>			

### Facts

- Rung straight ladder made of reinforced fibre glass
- Side-rails and rungs made of reinforced fibre glass plastic profiles (min. 10 years ageing resistance)
- Rectangular rungs grooved on both sides, 28 x 29 mm

- By using the metal suspension step, the insulation voltage is reduced to 1,000 V
- High-strength rung-to-side-rail connection
- Rung distance: 280 mm
- Ladder width: 420 mm (without stabiliser)
- Maximum load: 150 kg
- Suitable for working near or on live parts
- Tested up to 28,000 V as per DIN EN 61478:2002 Category 1
- nivello® ladder shoes with patented 2-axis inclination technology
- Note: Straight ladders over 3.0 m can be used without a stabiliser only when they are used exclusively for their intended purpose (e.g. permanently installed, fitted with hooks, fastened with a belt)
- Note: Products with glass-fibre reinforced plastic content are non-returnable due to their sensitivity

### **Scope of supply**

- Ladder: 1 x

### **Information on sustainability criteria**

---

- Corporate certification: ISO 9001
- Corporate certification: ISO 14001
- Corporate certification: EN 1090
- Corporate certification: EcoVadis
- RoHS
- REACH
- The MUNK Group complies with a Code of Conduct
- The Supply Chain Act does not apply due to our size
- The materials used are listed in the technical specification

- Resource-saving production: own photovoltaic systems
- Energy-efficient consumption during production: LED lighting
- Repairability, durability and quality: 15-year warranty on series products made in Germany
- Recyclability: Our products are mostly made of aluminium, steel or wood and can be fed directly into the recycling process.
- Socially acceptable working conditions in production: fair wages, gender equality
- Economical and recyclable packaging: no use of polystyrene, predominantly use of wood and cardboard, small amounts of plastic
- No health hazards for the users

## More product pictures

---

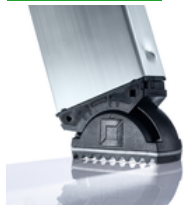


## Added value

---

The movable ladder shoe sets new standards in stability

[Learn more](#)



### Fiberglass

Ladders made of GFRP offer the perfect properties for special challenges. [Find out](#) what makes GFRP such a special material, how we use it for ladders and where these ladders are used.



### Retrofit stabiliser

Safe, standards-compliant ascent

- For retrofitting existing ladders with ladder lengths over 3.0 m in compliance with standards
- Non-slip ladder shoes
- Available in different widths



### Note: Working heights

- National regulations (e.g. TRBS 2121 Part 2 in Germany) must be complied with with regard to the maximum working height when using the ladder as a workstation.
- Information on [TRBS 2121 Part 2](#) has been summarised on our Service page
- Read our [tips and tricks](#) on how to calculate [working height](#)



## Certificates

---



17KFP1938-02 -  
Test Certificate  
"Bauart geprüft"

Valid in



DIN EN 131-  
3:2007  
PAK-  
ANFORDERUNG  
FÜR GS -  
ABSCHNITT  
3.1(PAH-  
REQUIREMENT  
FOR GS - CL. 3.1)  
AFPS GS 2014:01  
PAK  
EK5/AK1 17-1:2017  
DIN EN 131-1:2016  
DIN EN 131-2:2017

## Corporate certifications

---

on sustainability criteria



Management System  
ISO 9001:2015  
ISO 14001:2015  
[www.tuv.com](http://www.tuv.com)  
ID 9108612548

