

Order no.: 050019

## Work platform, mobile, step width 1,000 mm, grooved aluminium



Number of steps

- 2
- 3
- 4
- 5

### Specification

Working height <b>2.4 m</b>	Platform height <b>400 mm</b>	Step/Platform surface <b>Aluminium corrugated</b>	Non-slip class <b>R9</b>	Base area <b>850 mm</b>
Design type <b>Single-sided access   Rigid   With castors</b>	Number of steps/rungs <b>2 steps</b>	Platform included as step <b>Yes</b>	Step width <b>1 m</b>	Max. load capacity <b>200 kg</b>
Material <b>Aluminium</b>	Weight <b>20 kg</b>	Transport dimensions <b>885 x 1135 x 390 mm, 20 kg</b>	Business division <b>MUNK Günzburger Steigtechnik</b>	Article no. <b>050019</b>
Price <b>€ 1,045.00</b>				

### Facts

- Aluminium work platform
- Particularly stable design using rectangular tube side-rails
- Platform depth: 460 mm
- Steps with a depth of 240 mm

- Expandable in 200 mm increments (on request)
- With two pushing handles as standard
- Easy to move to new locations thanks to two lifting castors, Ø 125 mm
- Non-slip plastic shoes
- Inclination: 45°
- Available in various step and platform designs
- Step spacing 200 mm
- Maximum load: 200 kg

### Scope of supply

- Platform: 1 x
- Instructions for use and operation: 1 x

### Information on sustainability criteria

---

- Corporate certification: ISO 9001
- Corporate certification: EN 1090
- Corporate certification: EcoVadis
- RoHS
- REACH
- The MUNK Group complies with a Code of Conduct
- The Supply Chain Act does not apply due to our size
- The materials used are listed in the technical specification
- Resource-saving production: own photovoltaic systems
- Energy-efficient consumption during production: LED lighting
- Repairability, durability and quality: 15-year warranty on series products made in Germany
- Recyclability: Our products are mostly made of aluminium, steel or wood and can be fed directly into the recycling process.
- Socially acceptable working conditions in production: fair wages, gender equality
- Economical and recyclable packaging: no use of polystyrene, predominantly use of wood and cardboard, small amounts of plastic
- No health hazards for the users

## More product pictures

---



## Added value

---

### Safe working

- Handrails for safe ascent and descent
- Large-format, non-slip platforms
- Sturdy designs for secure stance



### Industrial grade

- Robust design for demanding applications
- Use of high-quality and high-strength materials



### Variant diversity

- Step stools with basic constructions made of aluminium rectangular tube slide-rails or steel round tube
- Welded and bolted versions
- Various step and platform designs



### From small to large

- The right product for every application
- One-sided and two-sided variants



### Non-slip plastic shoes

- Ensure secure stance
- High impact and abrasion resistance
- Simple replacement in the event of wear

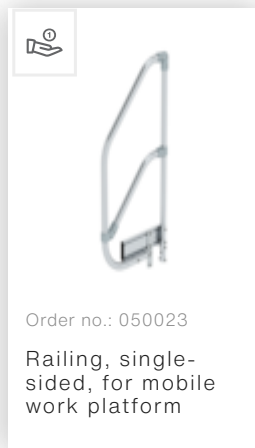
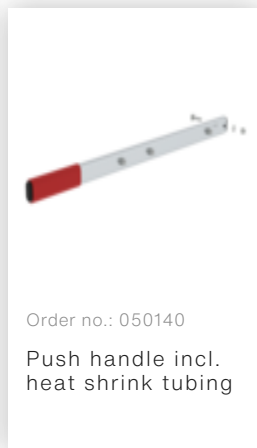
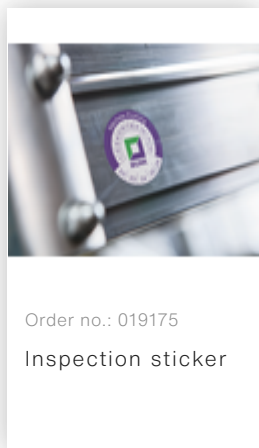
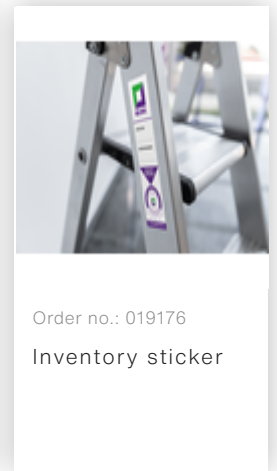
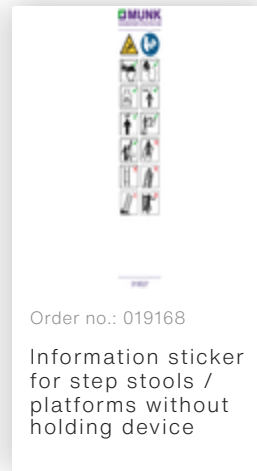
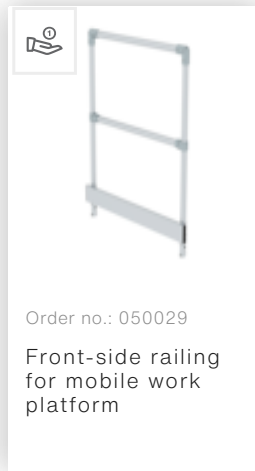
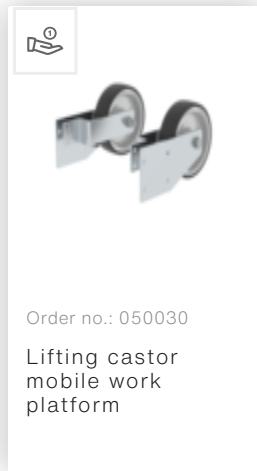
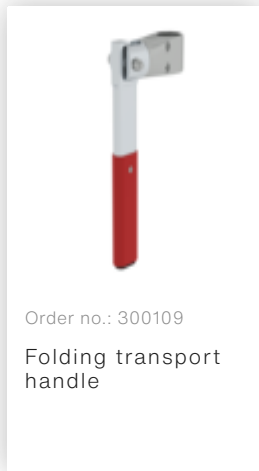


### Added ergonomics

- Integrated or retrofittable castors for easy movement from place to place
- Handles for ergonomic handling
- Foldable products for easy transport



## Accessories



## Corporate certifications

---

on sustainability criteria

