

Order no.: 051084

## Platform ladder with castors and handle



Number of steps

- 4
- 5
- 6
- 7
- 8
- 9
- 10

### Specification

Working height <b>2.9 m</b>	Step design <b>Steps</b>	Number of steps/rungs <b>4 steps</b>	Platform included as step <b>Yes</b>	Platform height <b>900 mm</b>
Step depth <b>80 mm</b>	Step/Rung distance <b>235 mm</b>	Height <b>1.65 m</b>	Base spread <b>1.16 m</b>	Inclination <b>70 °</b>
Lower outer width <b>610 mm</b>	Depth of side-rails <b>73 mm</b>	Depth of side-rails, support <b>58 mm</b>	Width of side-rails <b>25 mm</b>	Castor diameter <b>125 mm</b>
Max. load capacity <b>150 kg</b>	Design type <b>Freestanding   Single-sided access   With castors</b>	Weight <b>13 kg</b>	Transport dimensions <b>1751 x 605 x 180 mm, 13 kg</b>	Business division <b>MUNK Günzburger Steigtechnik</b>
Article no. <b>051084</b>	Price <b>€ 600.00</b>			

### Facts

- Platform ladder made of aluminium
- Stable rectangular tube side-rails
- Grooved steps with a depth of 80 mm

- Large, trapeze-shaped platform (400 / 360 x 425 mm)
- 4-fold edged step-to-side-rail connection
- Conical side-rail guide for safe stance
- Two handrails for safe ascent and descent (enclosed separately)
- 'safe-cap' ladder joint
- nivello® ladder shoes with patented 2-axis inclination technology
- Practical storage tray (350 x 200 mm)
- Rigid connection through metal struts detachable on both sides
- Spreader lock with two high-strength polyester straps
- Two lifting rollers Ø 125 mm and handles (supplied loose)
- Step spacing: 235 mm
- Ladder inclination: 70°
- Maximum load: 150 kg

### Scope of supply

- Ladder: 1 x
- Handrail (enclosed separately): 2 x
- Lifting castors: 2 x
- Instructions for use and operation: 1 x

### Information on sustainability criteria

- Corporate certification: ISO 9001
- Corporate certification: EN 1090
- Corporate certification: EcoVadis
- RoHS
- REACH
- The MUNK Group complies with a Code of Conduct
- The Supply Chain Act does not apply due to our size

- The materials used are listed in the technical specification
- Resource-saving production: own photovoltaic systems
- Energy-efficient consumption during production: LED lighting
- Repairability, durability and quality: 15-year warranty on series products made in Germany
- Recyclability: Our products are mostly made of aluminium, steel or wood and can be fed directly into the recycling process.
- Socially acceptable working conditions in production: fair wages, gender equality
- Economical and recyclable packaging: no use of polystyrene, predominantly use of wood and cardboard, small amounts of plastic
- No health hazards for the users

## More product pictures

---



## Added value

---

### Ladder joint safe-cap

- Smooth ladder joint with large contact surface and sturdy plastic protective cap
- The 6 rivets and thicker wall thickness provide for greater stability and protection at this sensitive point on the ladder, increasing its service life
- The safe-cap protects the ladder when in use, when loading and storing, as well as the contact surfaces, walls, truck loading areas and the joint itself

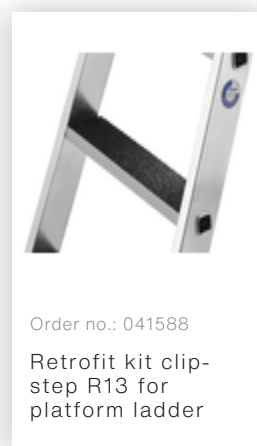
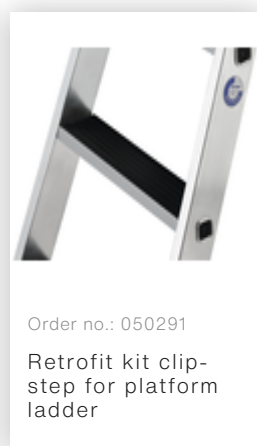
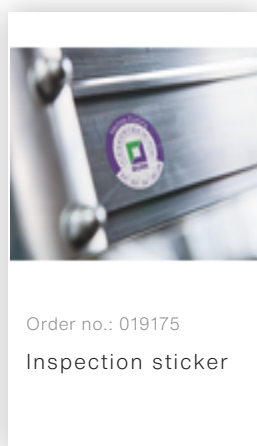
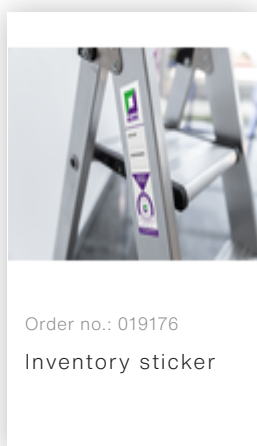
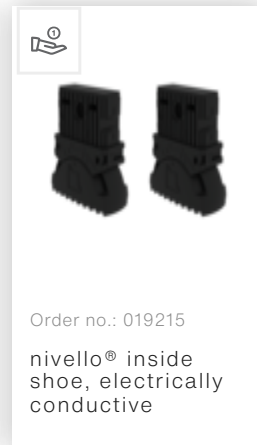
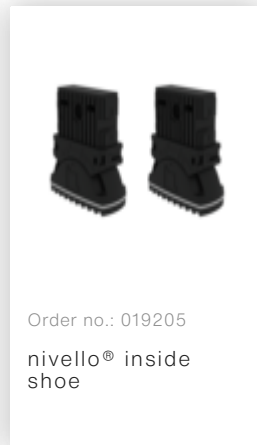
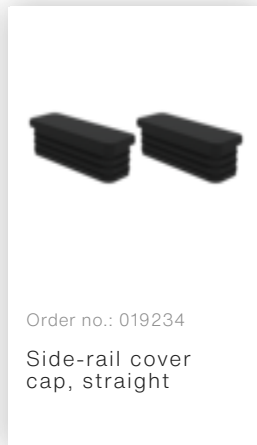
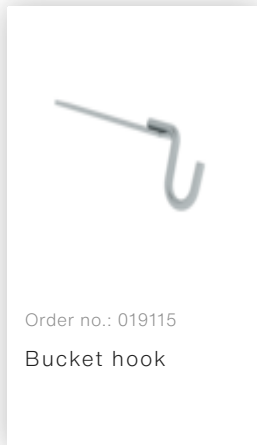
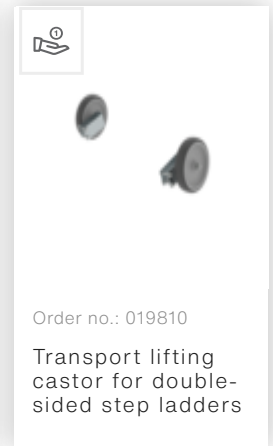
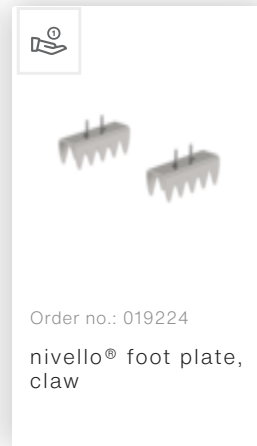
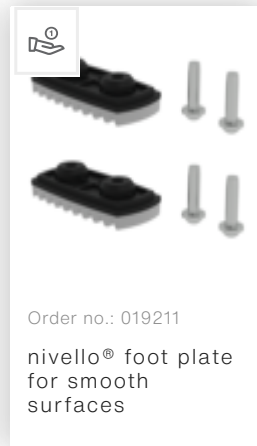
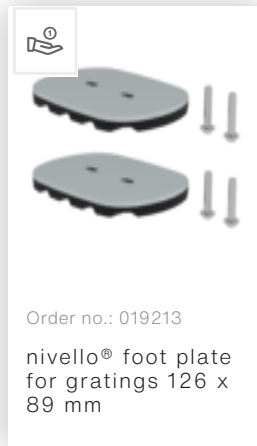
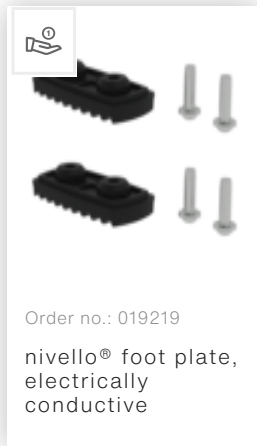


The movable ladder shoe sets new standards in stability

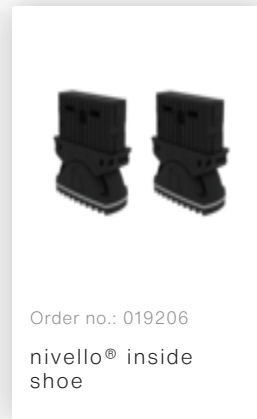
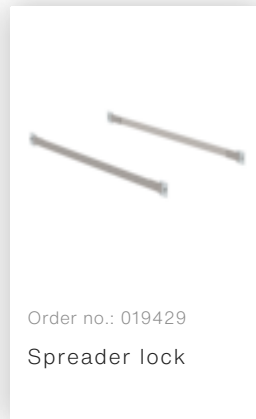
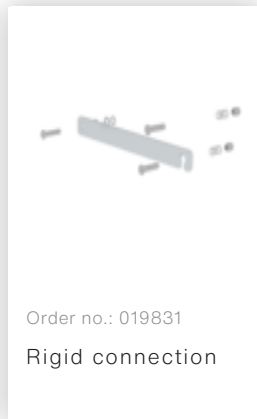
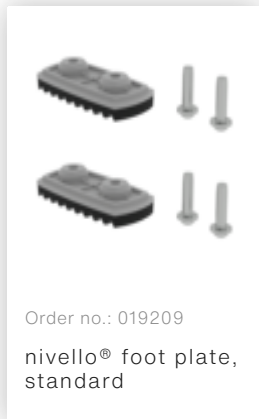
[Learn more](#)



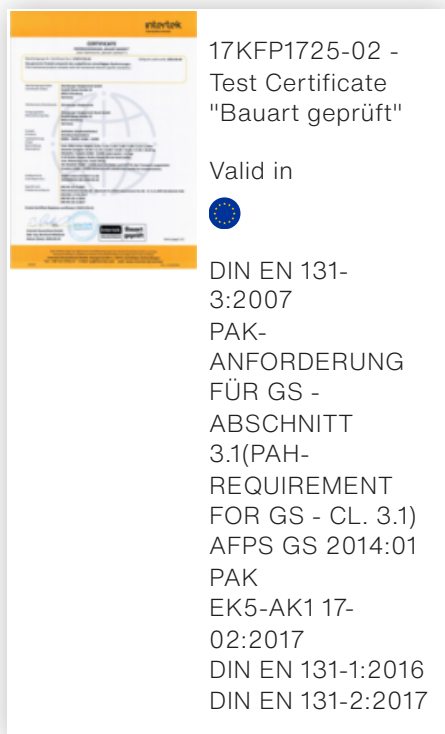
## Accessories



## Spare parts



## Certificates



## Corporate certifications

---

on sustainability criteria

