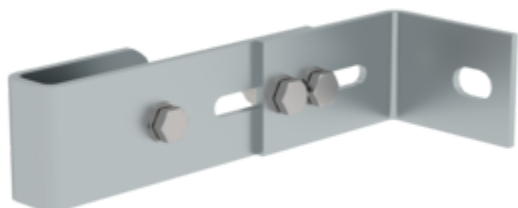


Order no.: 063250

Wall anchor, adjustable, 165–205 mm, galvanised steel



Wall clearance min [mm]

165 215 275 375

Specification

Wall anchor Single	Wall distance min. 165 mm	Wall distance max. 205 mm	Adjustment range 40 mm	Material Galvanised steel
Weight 1.2 kg	Transport dimensions 200 x 135 x 60 mm, 1.2 kg	Business division MUNK Günzburger Steigtechnik	Order no. 063250	Price € 49.00

Facts

- Adjustment range enables flexible use
- Robust construction for secure hold
- A firm hold even during intensive use
- Adjustable wall anchor

Scope of supply

- Wall anchor: 1 x
- Assembly instructions: 1 x

Information on sustainability criteria

- Corporate certification: ISO 9001
- Corporate certification: ISO 14001
- Corporate certification: EN 1090
- Corporate certification: EcoVadis
- RoHS
- REACH
- The MUNK Group complies with a Code of Conduct
- The Supply Chain Act does not apply due to our size
- The materials used are listed in the technical specification
- Resource-saving production: own photovoltaic systems
- Energy-efficient consumption during production: LED lighting
- Repairability, durability and quality: 15-year warranty on series products made in Germany
- Recyclability: Our products are mostly made of aluminium, steel or wood and can be fed directly into the recycling process.
- Socially acceptable working conditions in production: fair wages, gender equality
- Economical and recyclable packaging: no use of polystyrene, predominantly use of wood and cardboard, small amounts of plastic
- No health hazards for the users

More product pictures



Added value

Optimum planning

- Practical planning aids (available as [Downloads](#)) with tips for correct planning of vertical ladder systems
- Planning in close coordination with the client as well as the place and purpose of use
- Joint project planning



All **[fixed ladders / vertical ladders](#)** at a glance:

- [Single-flight vertical ladders](#) in accordance with DIN 18799-1/-3, DIN 14094-1 and DIN EN ISO 14122-4 (depending on the choice of standard and the situation on site at the exit, additional components such as exit steps, railings and safety doors may be required)
- DIN 18799-1: Stationary multiple-flight vertical ladders [on buildings](#)
- DIN 14094-1: Multiple-flight [emergency ladder systems \(emergency ladders\)](#).
- DIN EN ISO 14122-4: Stationary multiple-flight vertical ladders [on machinery](#).

Corporate certifications

on sustainability criteria



Management System
ISO 9001:2015
ISO 14001:2015
www.tuv.com
ID 9108612548

