

Order no.: 030408

## Bridging platform, foldable



Model versions

2x2



## Specification

Working height <b>2.7 m</b>	Platform height <b>690 mm</b>	Platform length <b>1.7 m</b>	Platform width <b>600 mm</b>	Step/Platform surface <b>Wood silk-screen printing</b>
Non-slip class <b>R11</b>	Base area length <b>2.17 m</b>	Base area width <b>660 mm</b>	Design type <b>Double-sided access   Foldable</b>	Number of steps/rungs <b>2x 2 steps</b>
Platform included as step <b>No</b>	Step depth <b>80 mm</b>	Step/Rung distance <b>235 mm</b>	Depth of side-rails <b>73 mm</b>	Max. load capacity <b>300 kg</b>
Material <b>Aluminium   Wood</b>	Weight <b>20.5 kg</b>	Transport dimensions <b>1690 x 665 x 183 mm, 20.5 kg</b>	Business division <b>MUNK Günzburger Steigtechnik</b>	Article no. <b>030408</b>
Price <b>€ 644.00</b>				

## Facts

- Lightweight, sturdy aluminium design
- Quick and easy installation thanks to hinges with quick-release fasteners

- 80 mm deep, grooved steps for safe ascent and descent
- Work safely and comfortably on the spacious standing area (1.70 x 0.60 m)
- Slip-resistant surface due to exchangeable film-faced plywood board
- Sufficient space for two persons plus material
- Easy to transport thanks to integrated grip hole in cover board, space-saving in storage
- Non-slip plastic shoes
- Max. load 300 kg

### Scope of supply

- Working plank: 1 x
- Instructions for use and operation: 1 x

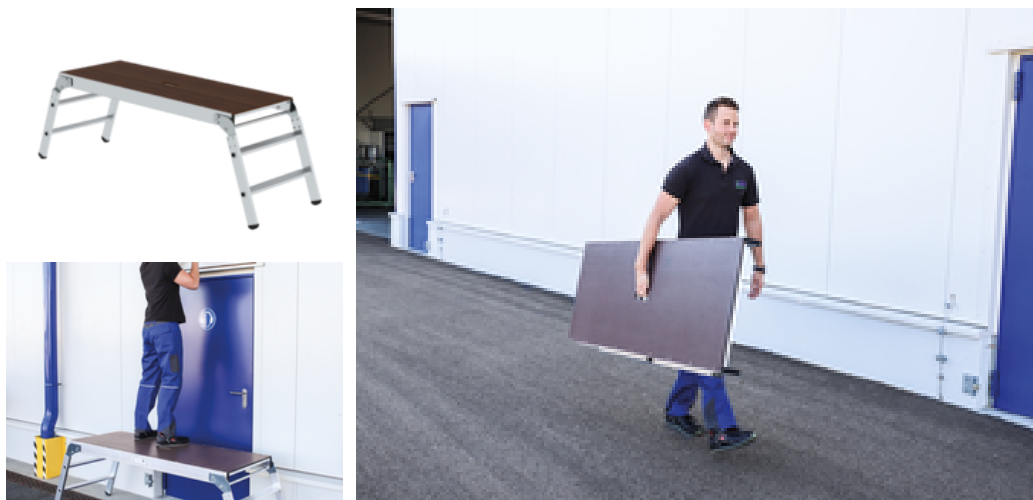
### Information on sustainability criteria

- Corporate certification: ISO 9001
- Corporate certification: EN 1090
- Corporate certification: EcoVadis
- RoHS
- REACH
- The MUNK Group complies with a Code of Conduct
- The Supply Chain Act does not apply due to our size
- The materials used are listed in the technical specification
- Resource-saving production: own photovoltaic systems
- Energy-efficient consumption during production: LED lighting
- Repairability, durability and quality: 15-year warranty on series products made in Germany
- Recyclability: Our products are mostly made of aluminium, steel or wood and can be fed directly into the recycling process.
- Socially acceptable working conditions in production: fair wages, gender equality
- Economical and recyclable packaging: no use of polystyrene, predominantly use of wood and cardboard, small amounts of plastic

- No health hazards for the users

## More product pictures

---



## Added value

---

### Safe working

- Large-format, non-slip platforms
- Sturdy designs for secure stance
- Optional railing for increased work safety



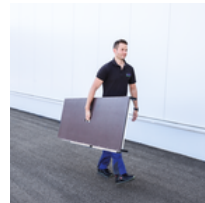
### Industrial grade

- Robust design for demanding applications
- Corrosion-resistant fixtures
- Use of high-quality and high-strength materials



### Flexibility

- Easy to transport, space-saving in storage
- Sufficient space; depending on version for up to two persons plus working implements and material



### Non-slip plastic shoes

- Ensure secure stance
- High impact and abrasion resistance
- Simple replacement in the event of wear



### **Sponsored by BG BAU**

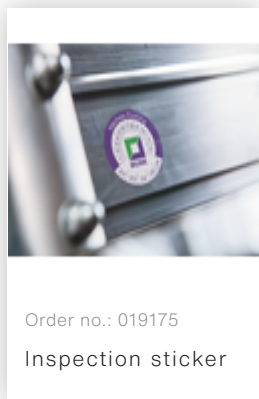
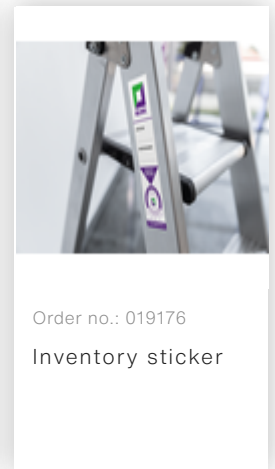
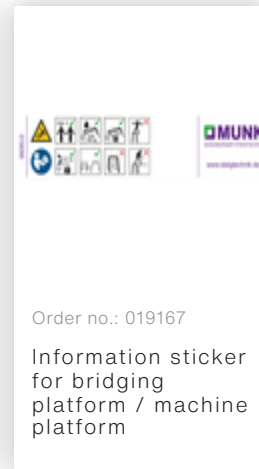
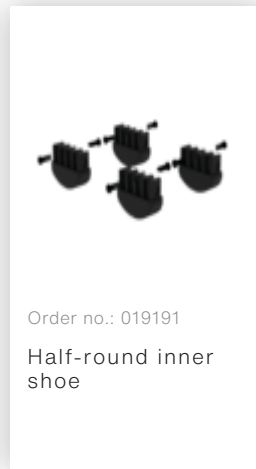
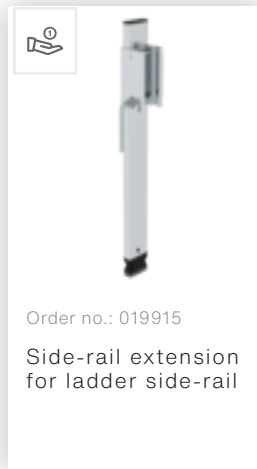
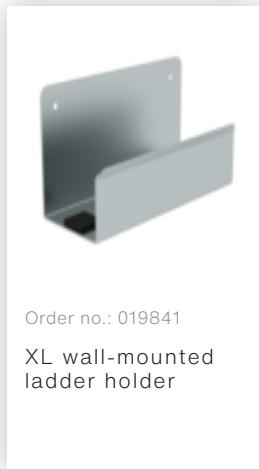
Specification subject to conditions; for the latest information please visit the BG BAU website (statutory accident insurance company for the construction and construction related services in Germany). Since 2014, the BG BAU has been promoting the purchase of platform ladders, step stools and ladder accessories with single-sided and double-sided access. All members of the BG BAU profit from this. This aims to prevent work accidents on building sites and improve ergonomic working practices. For more information by BG BAU, please visit:

[www.bgbau.de/service/angebote/arbeitsschutzpraemien](http://www.bgbau.de/service/angebote/arbeitsschutzpraemien)

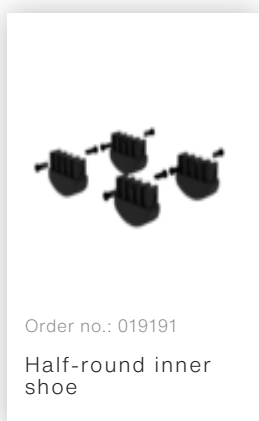
A brief overview of the subsidy and an overview of our eligible products can be found on our website under [know-how](#).



## Accessories



## Spare parts



## Corporate certifications

---

on sustainability criteria

