



Order no.: 070500

## De-icing scaffolding system, mobile

Model versions

### Specification

Platform height <b>2.8 m</b>	Railing height <b>1 m</b>	Height <b>3.9 m</b>	Step width <b>600 mm</b>	Total width <b>1.32 m</b>
Scaffolding length <b>3 m</b>	Weight <b>225 kg</b>	Transport dimensions <b>3122 x 1325 x 3904 mm, 196 kg</b>	Business division <b>MUNK Günzburger Steigtechnik</b>	Article no. <b>070500</b>
Price <b>€ 9,825.00</b>				

### Facts

- For the safe and quick removal of ice and snow loads from trucks and commercial vehicles. Also ideal for repairs to truck tarpaulins and superstructures.
- Compact, stable aluminium scaffolding system
- Easy to move on four swivel castors and can therefore also be used in any location
- Maintenance-free, durable and weather-resistant

- Inclined ascent with handrail and 100 mm deep steps made of perforated aluminium cover (R13) plus lower step
- Non-slip platform made of aluminium grating (R13) with trapdoor. The hole pattern also prevents water pooling and the retention of dirt and snow
- 4-sided railings with foot and knee boards for a high level of safety at work
- Simple assembly without the need for tools thanks to push-fit connections and automatically closing locking claws
- Design takes into account DIN EN 1004
- Maximum load: 1.5 kN/m<sup>2</sup>
- Fast delivery (3–5 working days)

### Scope of supply

- Installation material: 1 x
- Assembly instructions: 1 x

### Information on sustainability criteria

---

- Corporate certification: ISO 9001
- Corporate certification: EN 1090
- Corporate certification: EcoVadis
- RoHS
- REACH
- The MUNK Group complies with a Code of Conduct
- The Supply Chain Act does not apply due to our size
- The materials used are listed in the technical specification
- Resource-saving production: own photovoltaic systems
- Energy-efficient consumption during production: LED lighting
- Repairability, durability and quality: 15-year warranty on series products made in Germany
- Recyclability: Our products are mostly made of aluminium, steel or wood and can be fed directly into the recycling process.

- Socially acceptable working conditions in production: fair wages, gender equality
- Economical and recyclable packaging: no use of polystyrene, predominantly use of wood and cardboard, small amounts of plastic
- No health hazards for the users

## More product pictures

---



## Added value

---

### Product configurator

Configuring, enquiring about and ordering individual products could not be easier with our [product configurator](#) for stairs, bridging steps and mobile platform stairs. Simply enter your required dimensions and versions step by step, and a rotating 3D model will appear in real time. To save your configuration and request a quotation requires a login which will be set up for you by our Sales team.



### Safety railing

- Railings and handrails on both sides ensure a high level of safety at work
- Fixed size or telescopic safety door



### Modular kit system

- Individually and cost-efficiently combinable for the respective requirement
- Platform heights from 1.25 to 3.0 m
- Three different platform lengths can be selected

### Ascent

- Non-slip designs for secure footing
- All kinds of different materials can be selected with non-slip classes from R 9 to R 13 – suitable for the specific application purpose



## Modular walkway systems

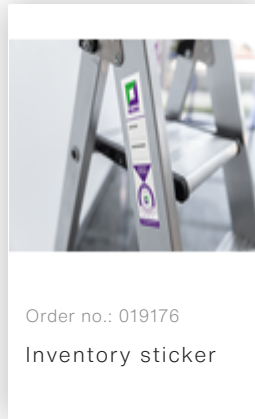
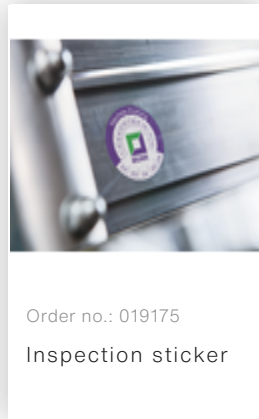
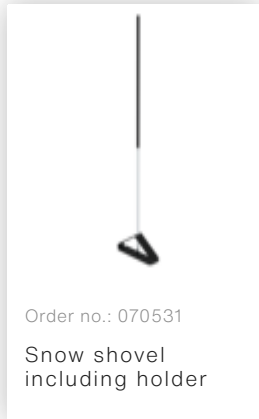
- For a wide range of indoor applications in production, warehouses, as access to machines, as a walkway along building walls or as practical access for de-icing commercial vehicles in the winter months
- Thanks to innovative modular construction, walkway systems can be assembled conveniently, cost-effectively and yet precisely to meet individual requirements
- The platform height of the walkway systems can be individually determined between 1.25 and 3.0 metres. The desired total length is achieved by way of combining three different walkway lengths
- The modules can be easily assembled using pre-assembled modules, securely connected to one another and fastened to the underlying surface using foot brackets
- The maintenance-free modules are manufactured as a stable, corrosion-resistant aluminium construction with a supporting frame.
- Maximum load: 1.5 kN / m<sup>2</sup>, step load 150 kg, total load 300 kg
- Access to the walkway conveniently via stairs 45° with handrails on both sides and automatically closing safety door.
- The delivery from the factory is made in pre-assembled modules for quick and simple assembly in accordance with the enclosed assembly instructions

## Note

When assembling a walkway, only modules with the same platform height can be combined. Please contact us if you need different platform heights on a walkway system. This also applies if you need walkway systems for outdoor use, as they are primarily designed for indoor use (with the exception of de-icing systems).

## Accessories

---



## Corporate certifications

---

on sustainability criteria

